

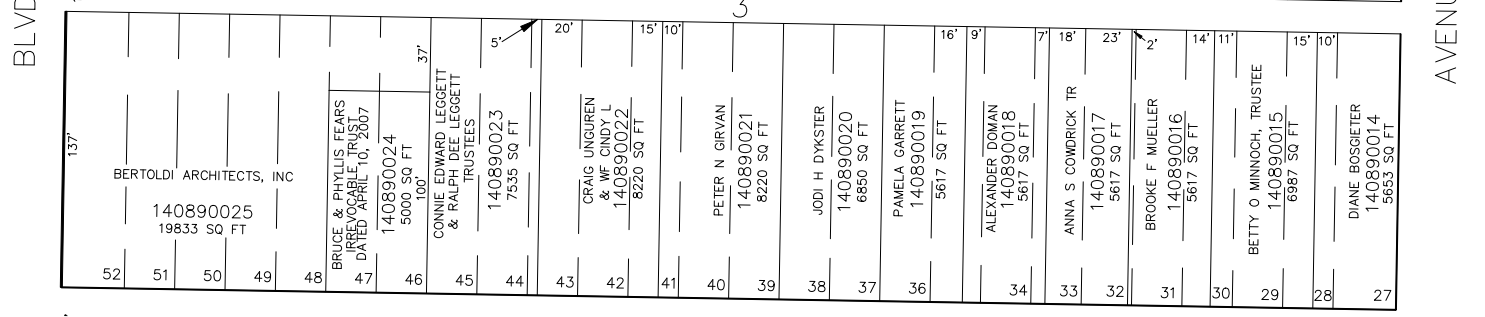
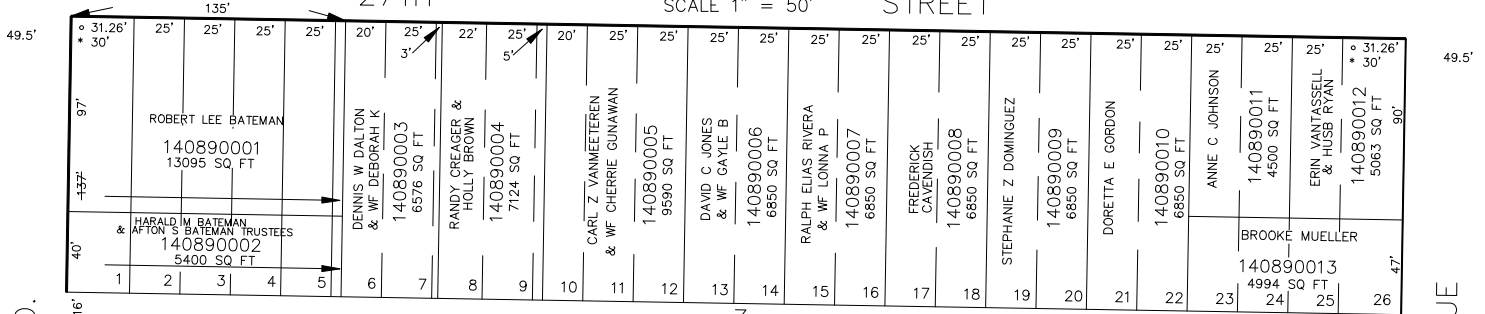
PART OF THE N.W. 1/4, SEC. 34, T.6N., R.1W., S.L.B. & M.

HIGHLAND ADDITION
AMENDED
BLOCKS 3 & 4

FOR COMPLETE ENG DATA SEE
ORIGINAL DEDICATION PLAT IN
BOOK 5, PAGE 1 OF RECORDS.

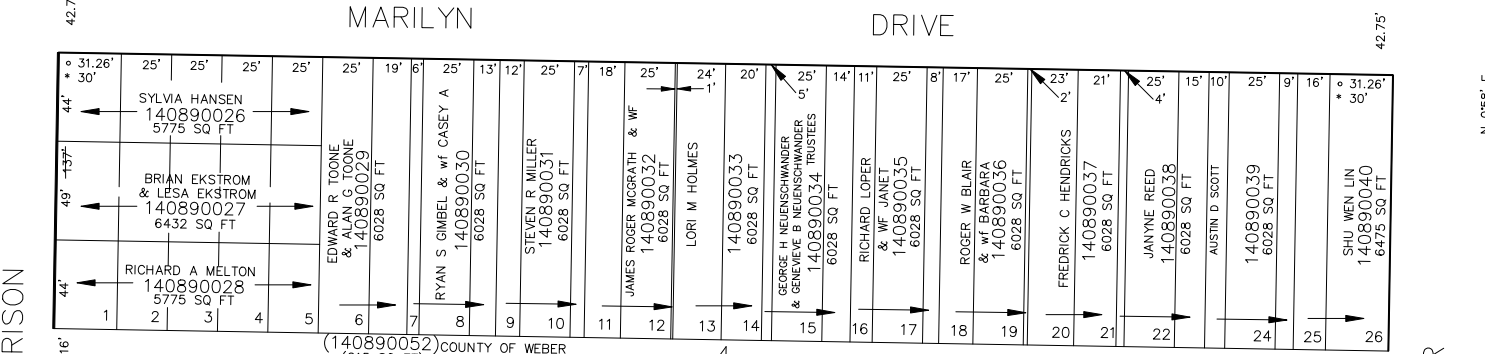
TAXING UNIT: 25 SEE BK. 2, PAGE 18

IN OGDEN CITY
SCALE 1" = 50' STREET

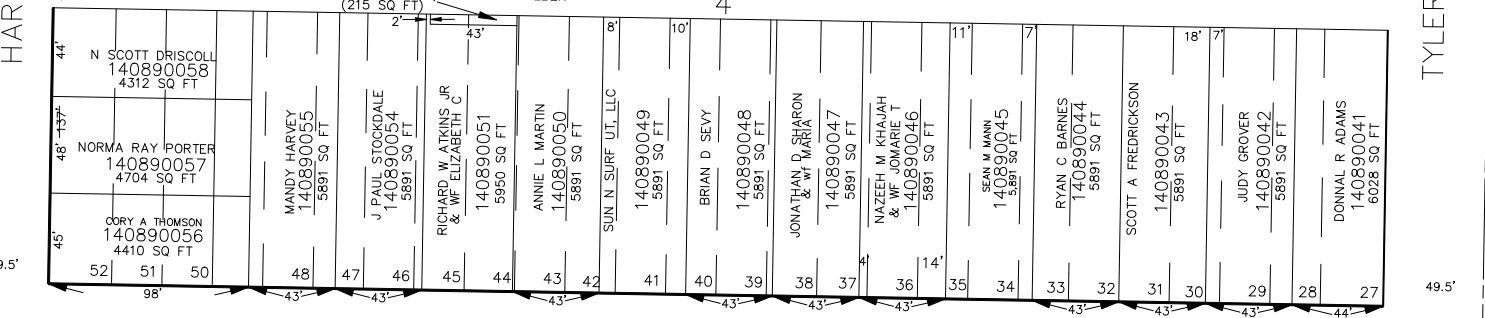


S 89'02" E

MARILYN DRIVE



(140890052) COUNTY OF WEBER
(215 SQ. FT.)



28TH STREET

S 89'02" E

SEE BK. 2, PAGE 15

N 0°58' E

HARRISON

14

OGDEN CITY ENG. DEPT. PLATS
ORIG. DED. PLAT

SEE PAGE 90

BM 1-94

SEE PAGE 88

TYLER

AVENUE

BLVD.